



clients logo

AREA SCHEDULE

APPLICATION SITE AREA: 9941 m²
LIDL SITE OWNERSHIP: 9517 m²

GROUND FLOOR

Sales Area: 1405 m²

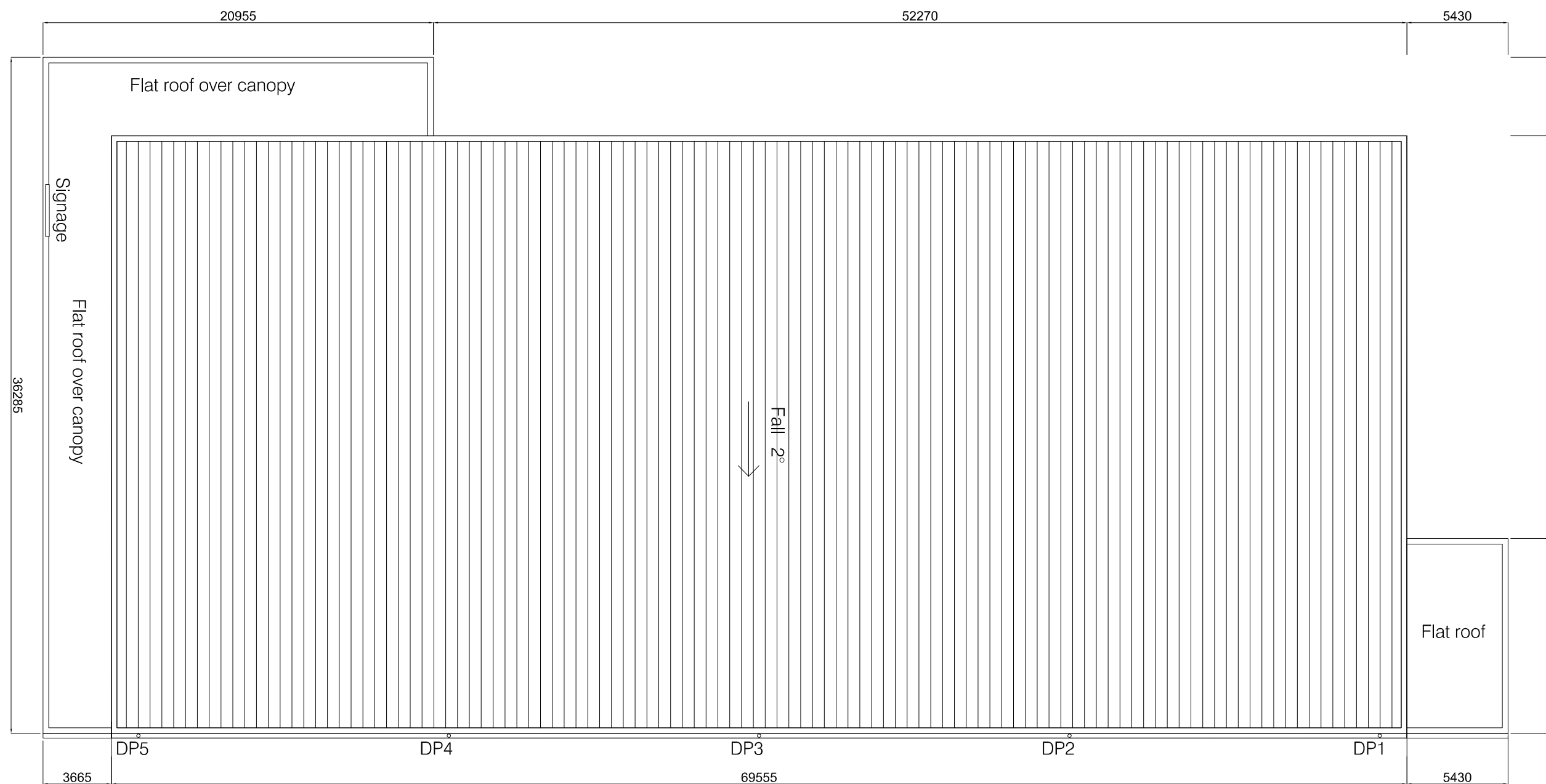
WAREHOUSE

Warehouse: 437 m²
Freezer: 37 m²
Chiller: 58 m²

ANCILLARY AREA:

Lobby: 22 m²
Bakery Prep Area: 74 m²
Customer Toilets: 11 m²
Cash Room: 10 m²
Office: 9 m²
Welfare: 71 m²
Utilities: 16 m²
Internal Wall: 61 m²

TOTAL GF LIDL GIA: 2211 m²



REV	DATE	DESCRIPTION	BY

IN CASE OF DOUBT OR DISCREPANCIES PLEASE REFER TO ARCHITECT FOR INSTRUCTIONS.
DRAWING AND SUITABILITY NUMBERS IN ACCORDANCE WITH BS1192:2007.
THIS DRAWING SHOULD NOT BE SCALED.
THIS DRAWING IS COPYRIGHT.

SUITABILITY NUMBER KEY:

WIP	S0 - Work In Progress*	DOCUMENTATION - SIGN-OFF
SHARED	S1 - Fit for co-ordination**	A - Fit for construction
	S2 - Fit for information	B - Fit for construction, with comments
	S3 - Fit for internal review and comment	C - Comprehensive revisions needed
	S4 - Fit for construction approval	ARCHIVE
		AB - As Built
		FC - Final Construction

DOCUMENTATION

D1 - Fit for costing	* For internal pre-issue usage only.
D2 - Fit for tender	** For model file usage only.
D3 - Fit for contractor design	
D4 - Fit for manufacture/ procurement	

boyesrees

4th Floor, Greyfriars House
Greyfriars Road, Cardiff CF10 3AL
Tel: 029 2055 8900 Fax: 029 2039 9592
www.boyesrees.co.uk

Registered office. At above Reg
No. 295 1683 (England & Wales)

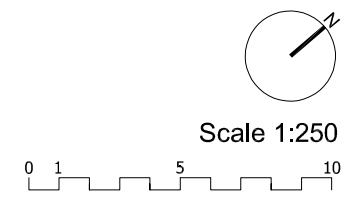
PROJECT TITLE:
Proposed Lidl store at
Foots Cray High Street
Sidcup
Kent
DA14 5HJ

DRAWING TITLE:
Proposed Roof Plan

DRAWN BY: RB **SCALE:** 1:250 @ A3

JOB NO: 5430 **DATE:** JUN 2017

PROJECT	ORIGIN	VOLUME	LEVEL	TYPE	DISCIP.	NUMBER
5430	BR	V01	00	DR	A	010102



010102 5430 BR V01 00 DR A 010102