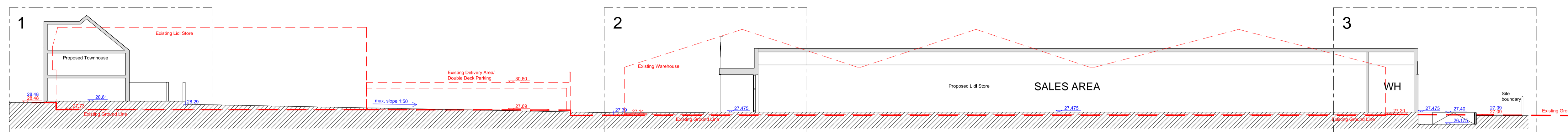


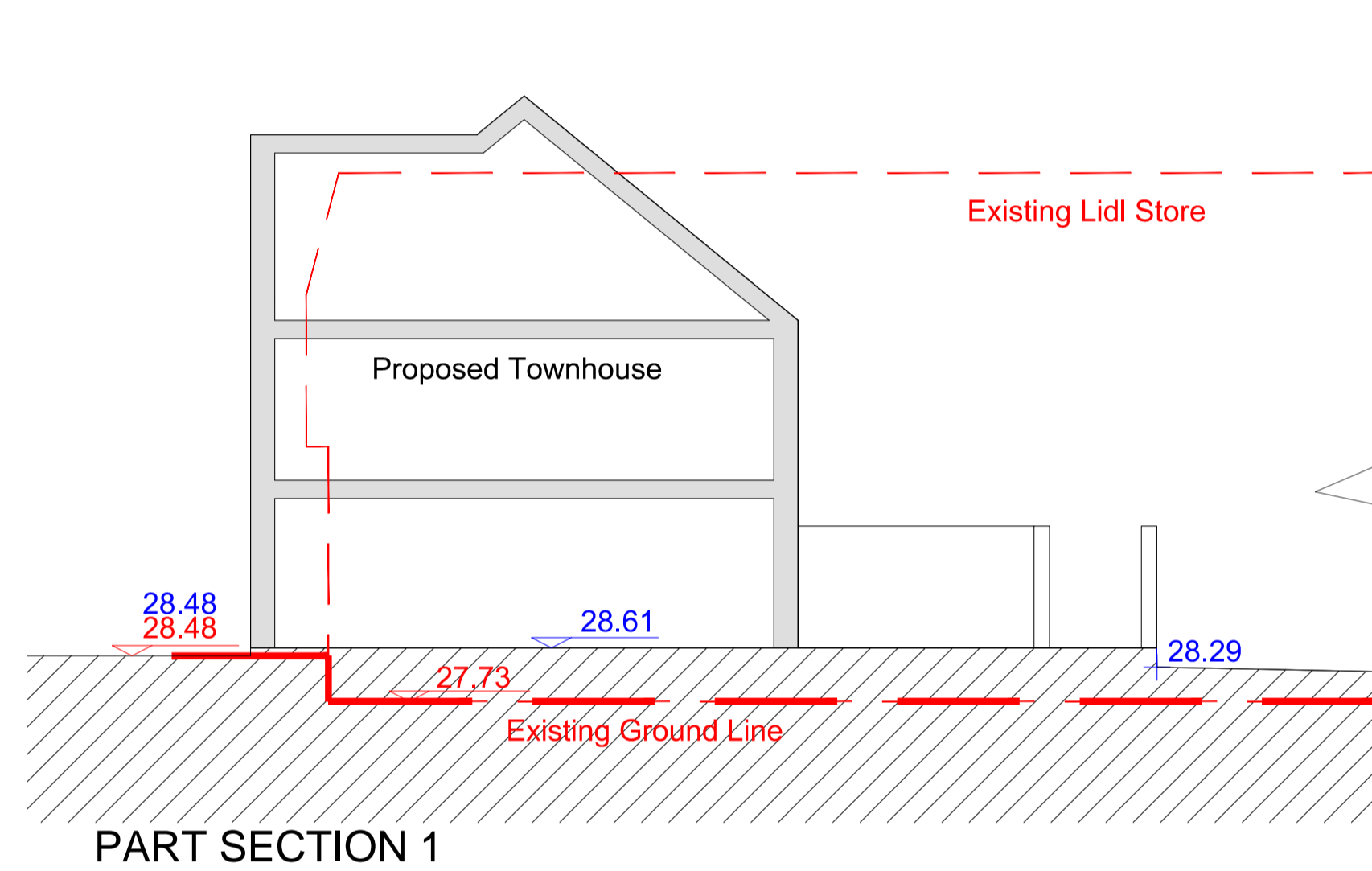


clients logo

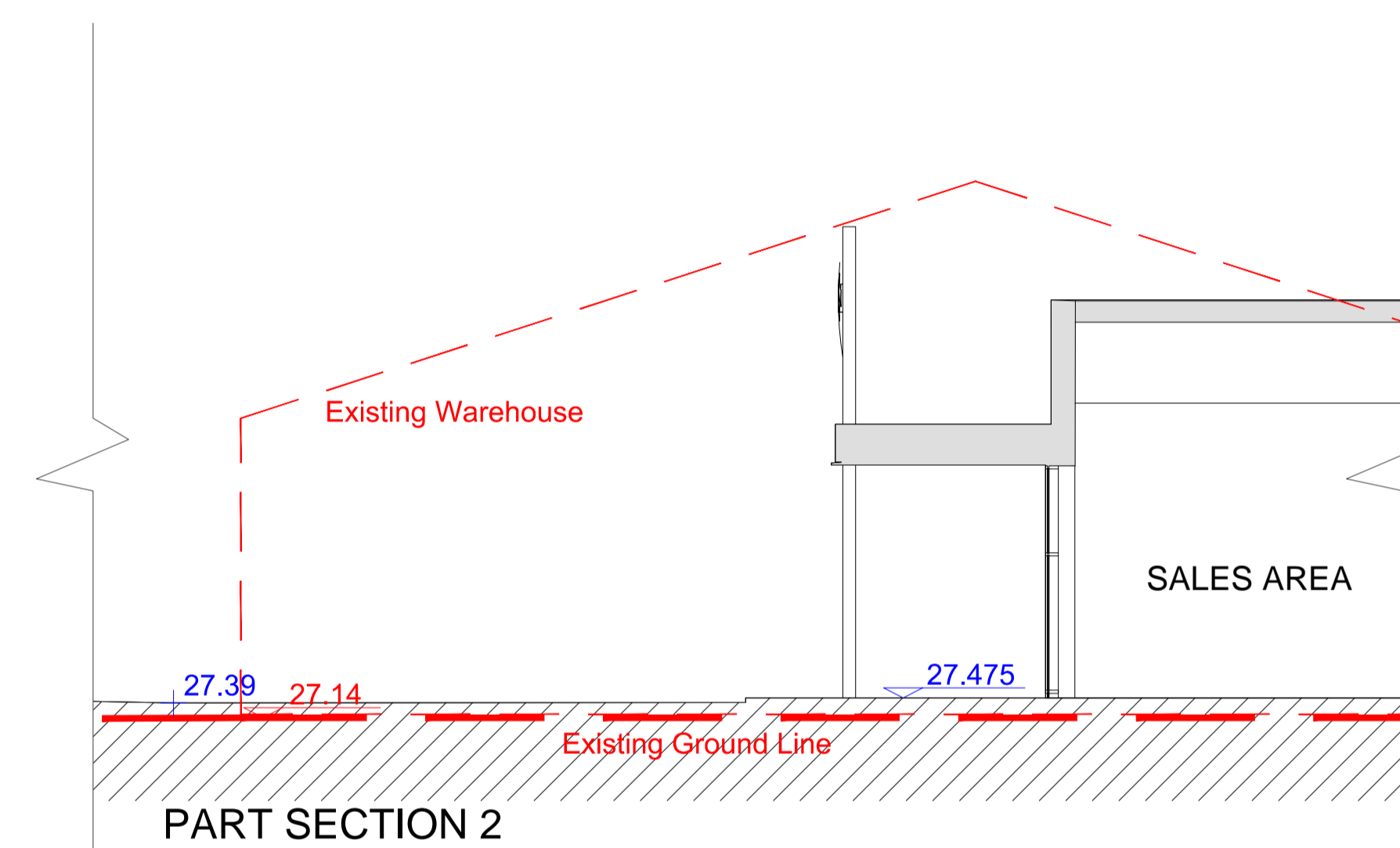
contractors logo



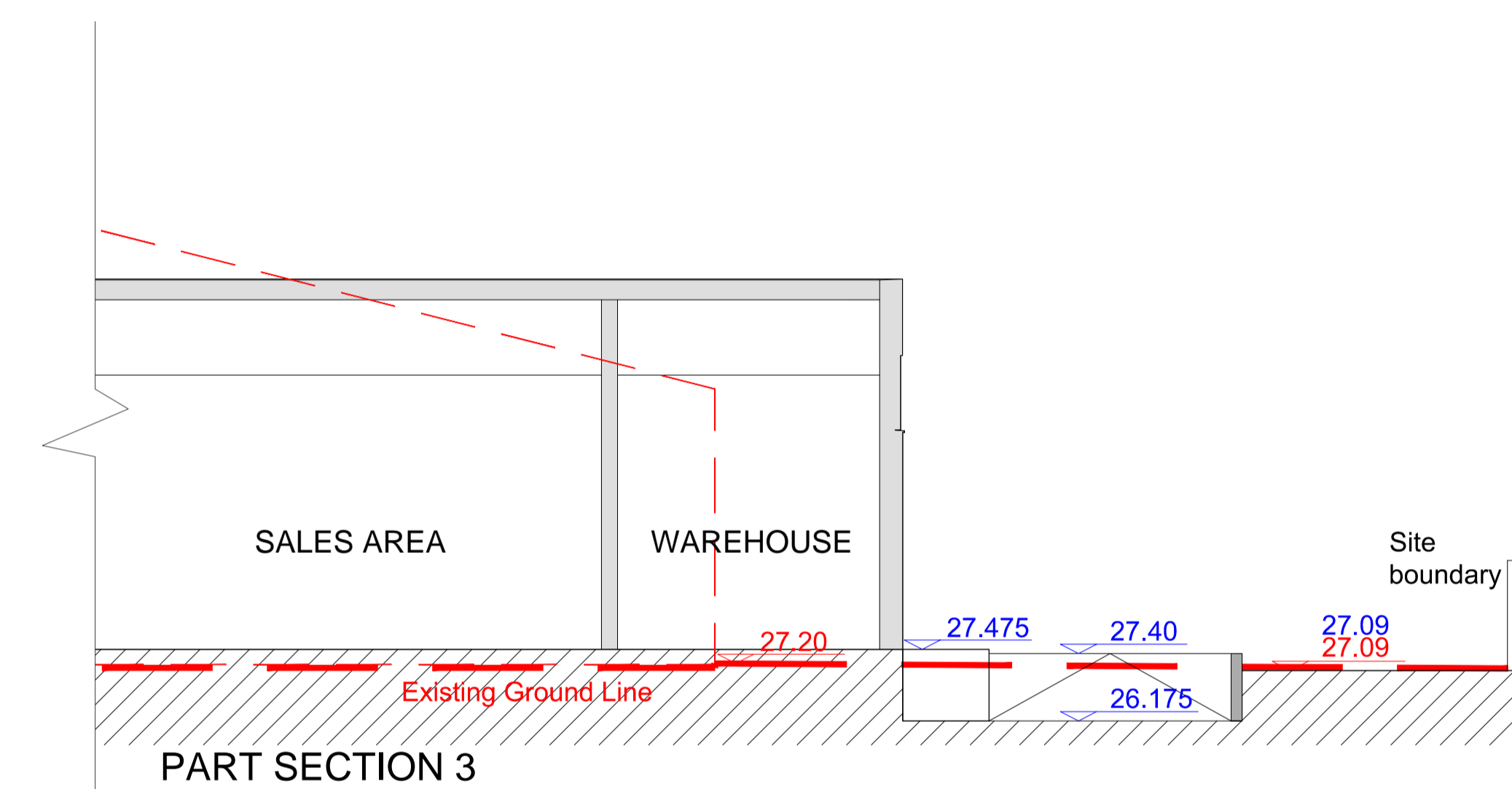
SECTION A-A



PART SECTION 1



PART SECTION 2



PART SECTION 3



- LEGEND**
- + 27.44 Proposed Finished Level
 - + 27.09 Existing Finished Level
 - Existing Building Profile
 - Existing Ground Line



REV	DATE	DESCRIPTION	AW	BY
1	26.09.17	Legend added		

IN CASE OF DOUBT OR DISCREPANCIES PLEASE REFER TO ARCHITECT FOR INSTRUCTIONS.
DRAWING AND SUITABILITY NUMBERS IN ACCORDANCE WITH BS1192:2007.
THIS DRAWING SHOULD NOT BE SCALED.
THIS DRAWING IS COPYRIGHT.

SUITABILITY NUMBER KEY:

WIP	W0 - Work in Progress*	DOCUMENTATION - SIGN-OFF
SHARED	S1 - Fit for co-ordination**	A - Fit for construction
	S2 - Fit for information	B - Fit for construction, with comments
	S3 - Fit for internal review and comment	C - Comprehensive revisions needed
	S4 - Fit for construction approval	ARCHIVE
DOCUMENTATION	D1 - Fit for costing	AB - As Built
	D2 - Fit for tender	FC - Final Construction
	D3 - Fit for contractor design	* For internal pre-issue usage only.
	D4 - Fit for manufacture/procurement	** For model file usage only.

boyesrees architects
4th Floor, Greyfriars House
Greyfriars Road, Cardiff CF10 3AL
Tel: 029 2055 8900 Fax: 029 2039 9592
www.boyesrees.co.uk
Registered office: As above Reg No. 295 1683 (England & Wales)

PROJECT TITLE:
Proposed Lidl Store at
Foots Cray High Street
Sidcup
Kent
DA14 5HJ

DRAWING TITLE:
Proposed Site Section

DRAWN BY: RB **SCALE:** As Indicated @A1

JOB NO: 5430 **DATE:** SEP. 17

SUITABILITY: SO **REVISION:** -

PROJECT	ORIGIN	VOLUME	LEVEL	TYPE	DISCIP.	NUMBER
5430	BR	V01	XX	DR	A	010200

C:\Users\rb\Documents\5430\5430_010200_Proposed Site Section.dwg
 26/09/2017 10:50:00
 1:1000
 RB