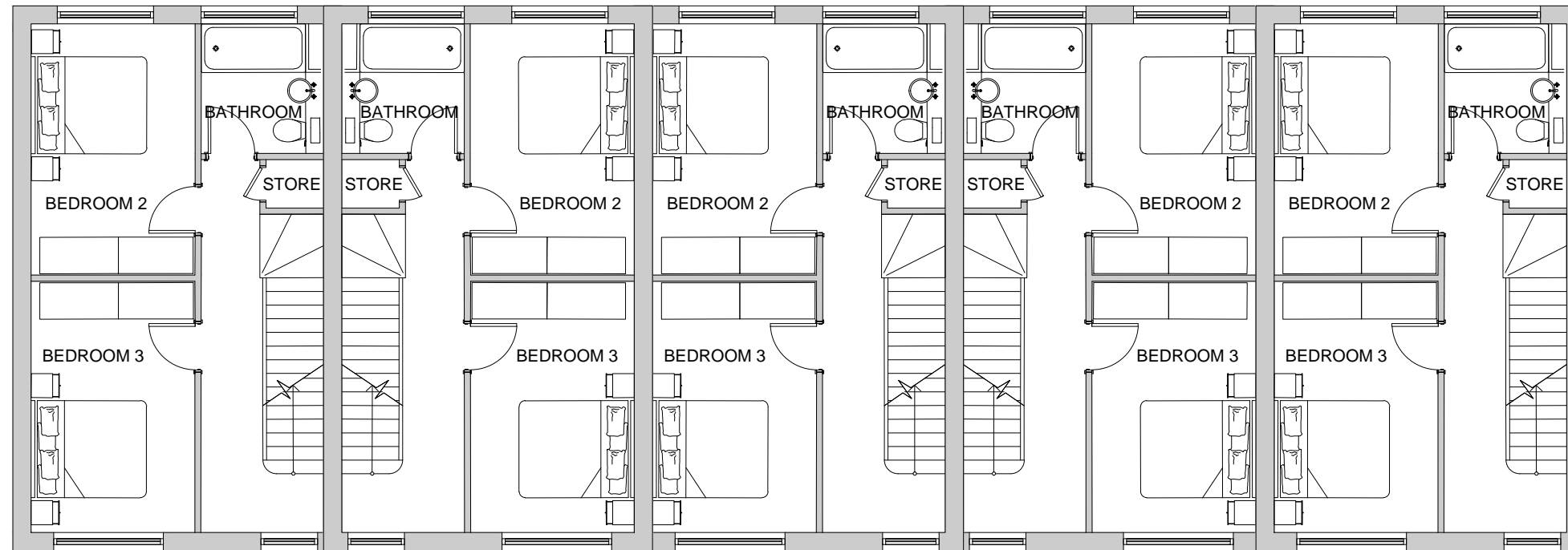
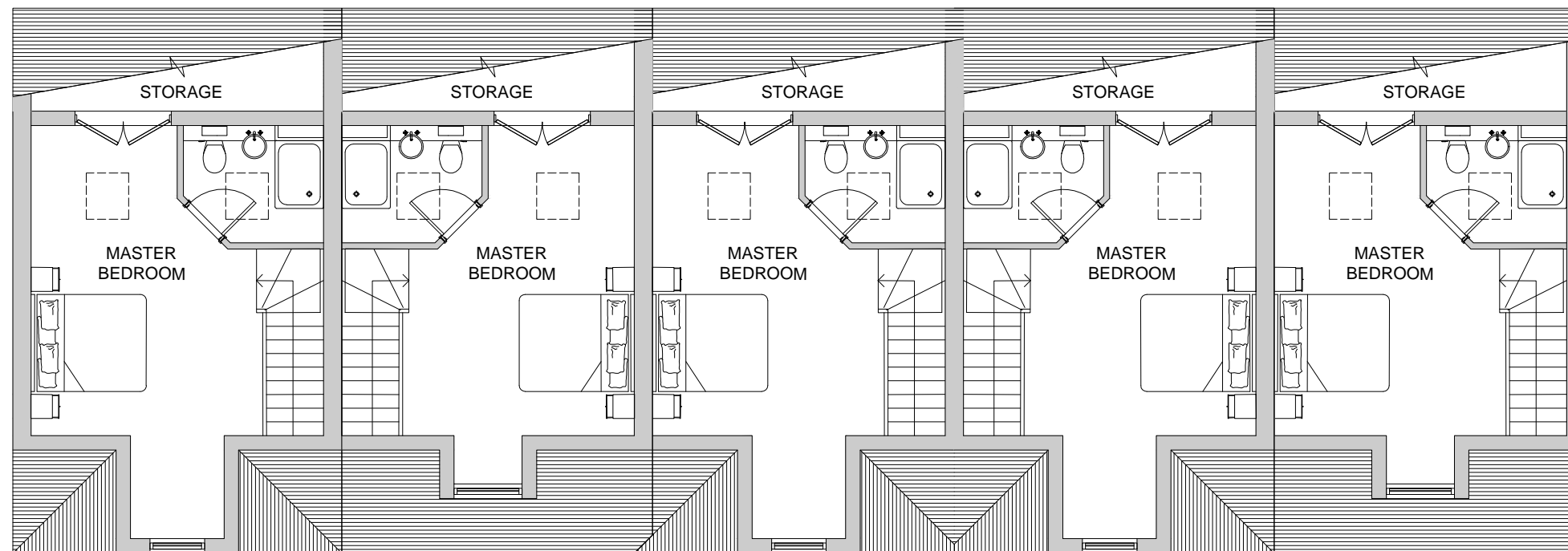




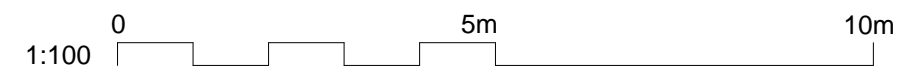
clients logo



FIRST FLOOR PLAN



SECOND FLOOR PLAN



REV	DATE	DESCRIPTION	BY
1	15.03.17	Amended to client's comments	AW

IN CASE OF DOUBT OR DISCREPANCIES PLEASE REFER TO ARCHITECT FOR INSTRUCTIONS.
DRAWING AND SUITABILITY NUMBERS IN ACCORDANCE WITH BILLING 2007.
THIS DRAWING SHOULD NOT BE SCALED.
THIS DRAWING IS COPYRIGHT.

SUITABILITY NUMBER KEY:	
WIP	DOCUMENTATION - SIGN-OFF
S0 - Work in Progress*	A - Fit for construction
SHARED	B - Fit for construction, with comments
S1 - Fit for co-ordination**	C - Comprehensive revisions needed
S2 - Fit for information	ARCHIVE
S3 - Fit for internal review and comment	AB - As Built
S4 - Fit for construction approval	FC - Final Construction
DOCUMENTATION	
D1 - Fit for costing	* For internal pre-issue usage only.
D2 - Fit for tender	** For model file usage only.
D3 - Fit for contractor design	
D4 - Fit for manufacture/ procurement	

4th Floor, Greyfriars House
Greyfriars Road, Cardiff CF10 3AL
Tel: 029 2055 8900 Fax: 029 2039 9592
www.boyesrees.co.uk
Registered office: As above Reg. No. 295 1683 (England & Wales)

PROJECT TITLE:
Proposed Lidl store at
Foots Cray High Street
Sidcup
Kent
DA14 5HJ

DRAWING TITLE:
Townhouse Floor Plans
First Floor and Second Floor Plans

DRAWN BY: AW SCALE: 1:100 @ A3

JOB NO: 5430 DATE: MAR. 17

SUITABILITY: S0 REVISION: 1

PROJECT	ORIGIN	VOLUME	LEVEL	TYPE	DISCIP.	NUMBER
5430	BR	V01	00	DR	A	010104